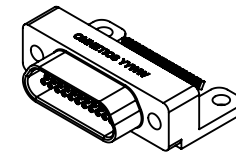
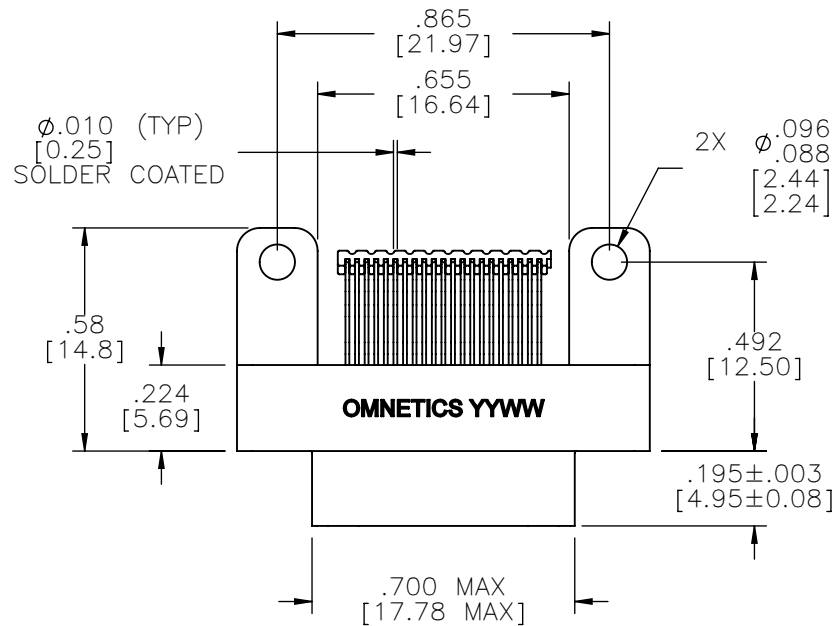
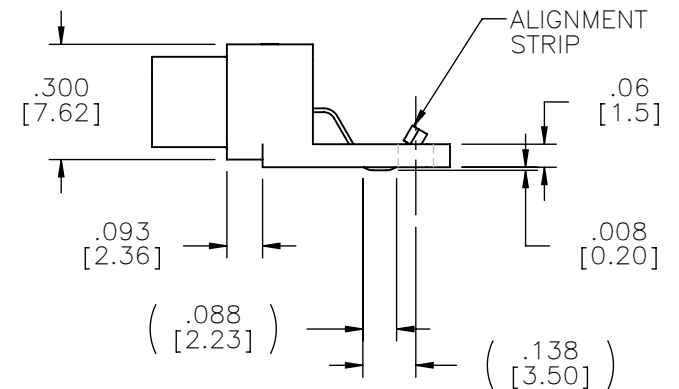
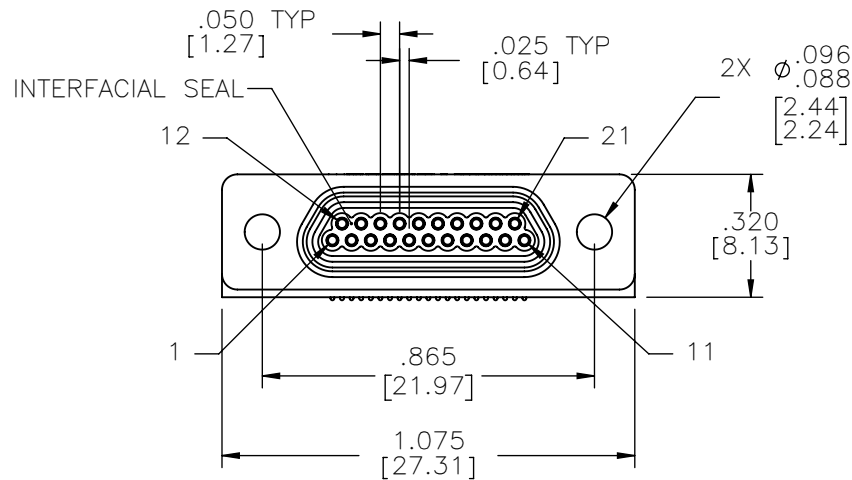


PART NO.	A99204-021	REV	ECO	DATE	APP
		A	101818	08-11-15	TLM



ACTUAL SIZE



NOTE:

DIMENSIONS IN [] ARE IN MILLIMETERS UNLESS OTHERWISE NOTED AND ARE FOR REFERENCE ONLY

MMS	THIRD ANGLE	
	-TOLERANCES-	
SLDW	UNLESS OTHERWISE NOTED	
	DIMENSIONS IN INCHES	
	2	PL DEC $\pm .01$
	3	PL DEC $\pm .005$
	4	PL DEC $\pm .0005$
	ANGLES $\pm 1^\circ$	

THIS DRAWING CONTAINS CONFIDENTIAL AND PROPRIETARY INFORMATION WHICH IS THE PROPERTY OF OMNETICS CONNECTOR CORP. THIS DOCUMENT MAY NOT, IN WHOLE OR IN PART, BE DUPLICATED, OR DISCLOSED FOR ANY PURPOSE, WITHOUT WRITTEN PERMISSION FROM OMNETICS CONNECTOR CORP.

DFTM. TLM
CHK'D.
APP'D.

DATE
07-27-15
DATE
DATE

TITLE:
(21) SOCKET FEMALE
HORIZONTAL SURFACE
MOUNT MICRO-D

OMNETICS
CONNECTOR CORPORATION
7260 COMMERCE CIRCLE EAST
MINNEAPOLIS, MN 55432
WWW.OMNETICS.COM

CAGE CODE **61873**
DWG NO. **A99204-021**
SHEET 1 OF 2
SCALE: 2:1
REV A

PART NO.	A99204-021	REV	ECO	DATE	APP
		A	101818	08-11-15	TLM

MATERIALS

HOUSING:

ALUMINUM 6061-T6, NICKEL
PLATE PER SAE-AMS-2404

INSULATOR & ALIGNMENT STRIP:

LIQUID CRYSTAL POLYMER (LCP)
PER ASTM D5138

CONTACT:

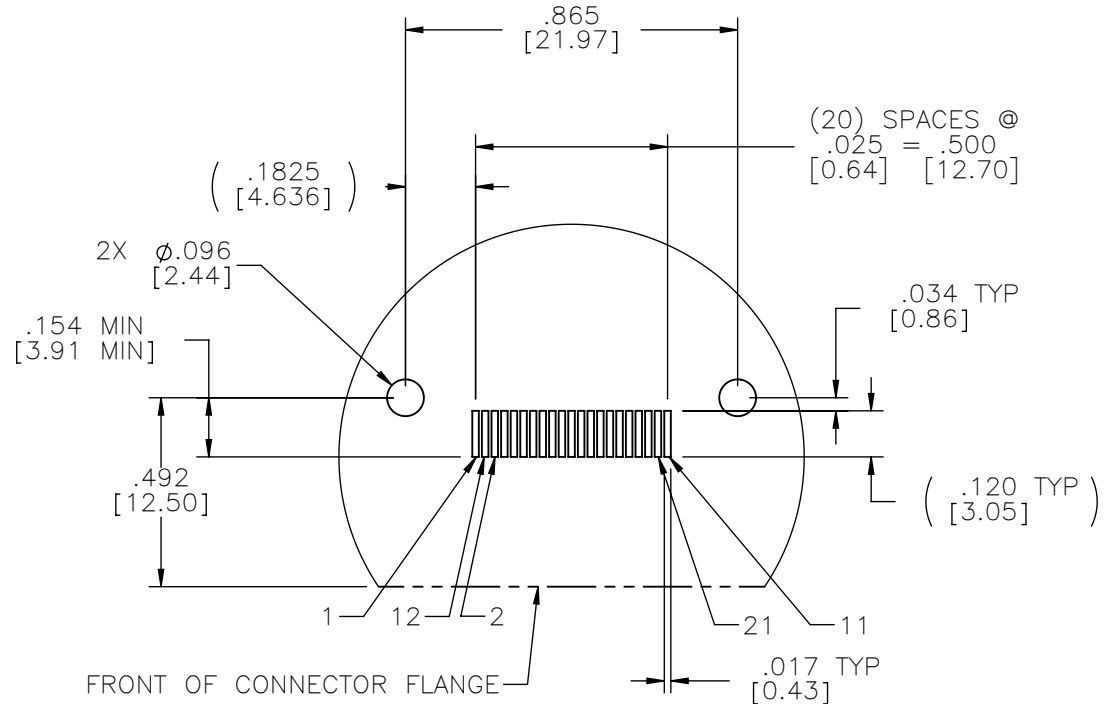
COPPER ALLOY PER MIL-DTL-83513, GOLD PLATED PER ASTM B488, (HARD GOLD) TYPE II CODE C CLASS 1.27

TERMINATION:

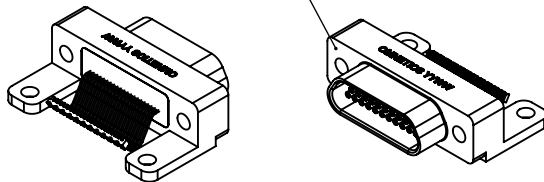
SOLDER COATED WITH SN63A
PER J-STD-006 OR AMS-P-
81728

INTERFACIAL SEAL:

SILICONE RUBBER PER A-A-
59588





SUGGESTED BOARD LAYOUT



ACTUAL SIZE

NOTE:

DIMENSIONS IN [] ARE IN
MILLIMETERS UNLESS
OTHERWISE NOTED AND ARE
FOR REFERENCE ONLY

MMDs SLDW	THIRD ANGLE 	THIS DRAWING CONTAINS CONFIDENTIAL AND PROPRIETARY INFORMATION WHICH IS THE PROPERTY OF OMNETICS CONNECTOR CORP. THIS DOCUMENT MAY NOT, IN WHOLE OR IN PART, BE DUPLICATED, OR DISCLOSED FOR ANY PURPOSE, WITHOUT WRITTEN PERMISSION FROM OMNETICS CONNECTOR CORP.			 CONNECTOR CORPORATION 7260 COMMERCE CIRCLE EAST MINNEAPOLIS, MN 55432 WWW.OMNETICS.COM	CAGE CODE 61873	
	—TOLERANCES— UNLESS OTHERWISE NOTED	TITLE:				DWG NO. A99204-021	
	DIMENSIONS IN INCHES	DFTM. TLM	DATE	(21) SOCKET FEMALE HORIZONTAL SURFACE MOUNT MICRO-D		SHEET 2 OF 2	
	2 PL DEC. ± .01 3 PL DEC. ± .005 4 PL DEC. ± .0005 ANGLES ± 1°	CHK'D.	DATE			REV A	
	APP'D.	DATE	SCALE: 2:1				