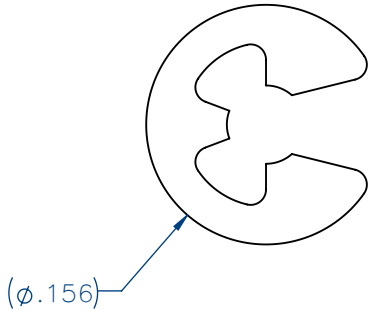
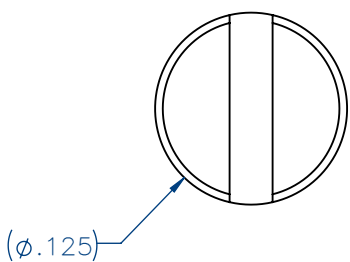
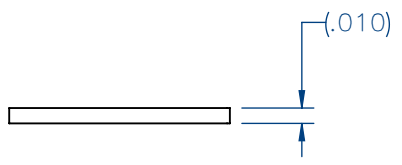
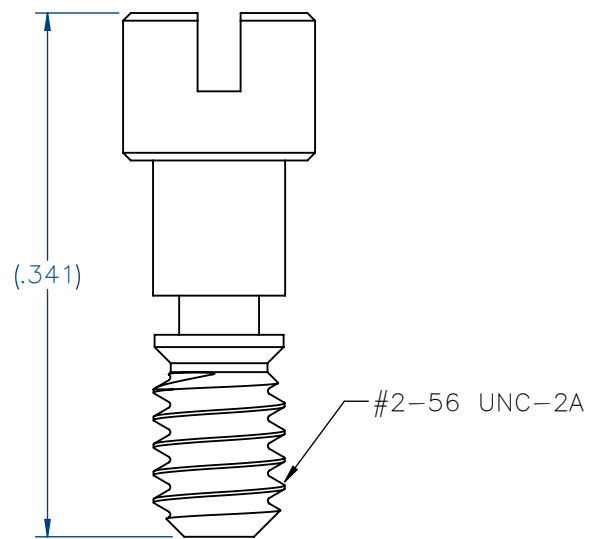


PART NO.	A97008-001	REV	ECO	DATE	APP
		A	98565	05-23-12	TLM



ACTUAL SIZE



NOTE:
KIT INCLUDES TWO (2) OF EACH COMPONENT

XXX	THIRD ANGLE
	-TOLERANCES- UNLESS OTHERWISE NOTED
SLD	DIMENSIONS IN INCHES
	2 PL DEC ± .01
	3 PL DEC ± .005
	4 PL DEC ± .0005
	ANGLES ± 1°

THIS DRAWING CONTAINS CONFIDENTIAL AND PROPRIETARY INFORMATION WHICH IS THE PROPERTY OF OMNETICS CONNECTOR CORP. THIS DOCUMENT MAY NOT, IN WHOLE OR IN PART, BE DUPLICATED, OR DISCLOSED FOR ANY PURPOSE, WITHOUT WRITTEN PERMISSION FROM OMNETICS CONNECTOR CORP.	
DFTM. JMJ	DATE 02-22-12
CHK'D.	DATE
APP'D.	DATE
TITLE: KIT, JACKSCREW OPTION 03	

OMNETICS
CONNECTOR CORPORATION
7260 COMMERCE CIRCLE EAST
MINNEAPOLIS, MN 55432
WWW.OMNETICS.COM

CAGE CODE 61873
DWG NO. A97008-001
SHEET 1 OF 1
SCALE: 8:1
REV A