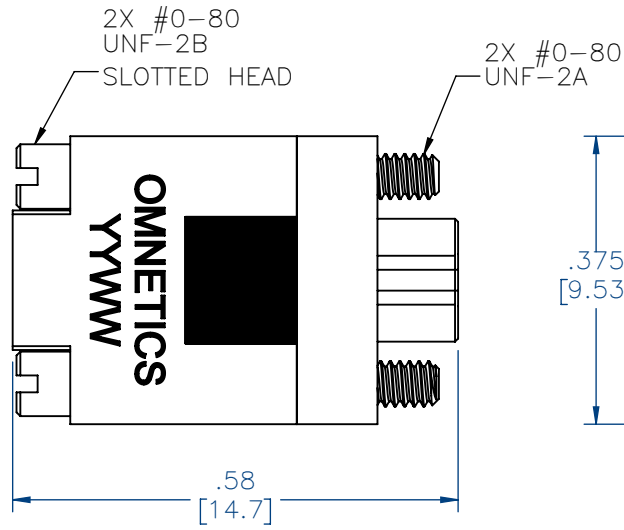
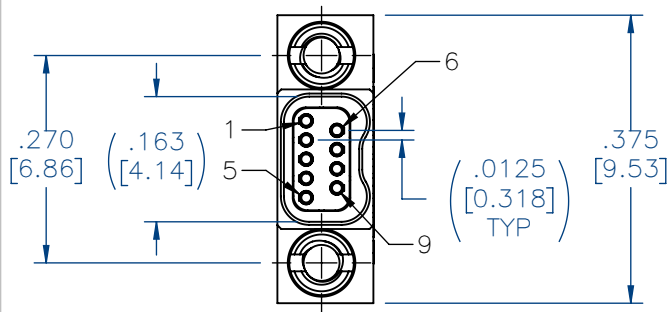
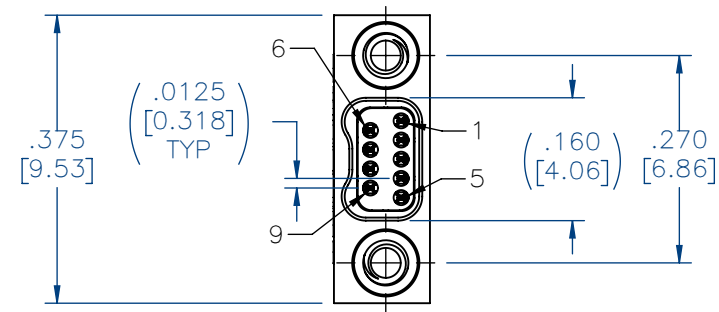


PART NO.	A40838-009	REV	ECO	DATE	APP
		A	103406	04-19-17	TLM

FEMALE



MALE



MATERIALS:

INSULATOR:
LIQUID CRYSTAL
POLYMER (LCP) PER
ASTM D5138

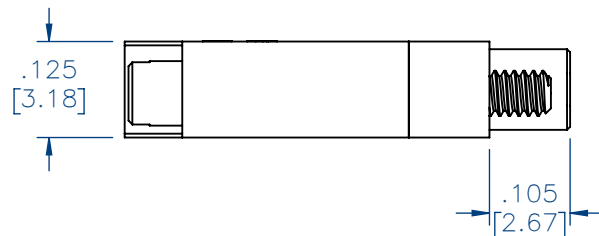
HOUSING:
ALUMINUM 6061-T6,
NICKEL PLATE PER
SAE-AMS-2404

HARDWARE:
303 STAINLESS STEEL
PER ASTM 582

CONTACTS:

MALE:
BERYLLIUM COPPER
PER ASTM B194,
C17200, GOLD PLATED
PER ASTM B488, (HARD
GOLD) TYPE II CODE C,
CLASS 1.27

FEMALE:
COPPER ALLOY PER
MIL-DTL-32139, GOLD
PLATED PER ASTM
B488, (HARD GOLD)
TYPE II CODE C, CLASS
1.27



NOTE:

DIMENSIONS IN [] ARE IN
MILLIMETERS UNLESS
OTHERWISE NOTED AND ARE
FOR REFERENCE ONLY



ACTUAL SIZE

MUM	THIRD ANGLE	THIS DRAWING CONTAINS CONFIDENTIAL AND PROPRIETARY INFORMATION WHICH IS THE PROPERTY OF OMNETICS CONNECTOR CORP. THIS DOCUMENT MAY NOT, IN WHOLE OR IN PART, BE DUPLICATED, OR DISCLOSED FOR ANY PURPOSE, WITHOUT WRITTEN PERMISSION FROM OMNETICS CONNECTOR CORP.	DATE 03-16-17	TITLE: (9) PIN MALE/FEMALE Bi-Lobe® CONNECTOR SAVER	CAGE CODE 61873	DWG NO. A40838-009
	-TOLERANCES- UNLESS OTHERWISE NOTED					
SLDW	DIMENSIONS IN INCHES	DFTM. ERB	DATE		7260 COMMERCE CIRCLE EAST MINNEAPOLIS, MN 55432 WWW.OMNETICS.COM	SHEET 1 OF 1
	2 PL DEC± .01 3 PL DEC± .005 4 PL DEC± .0005 ANGLES ± 1°	CHK'D.	DATE		SCALE: 4:1	REV A
		APP'D.	DATE			