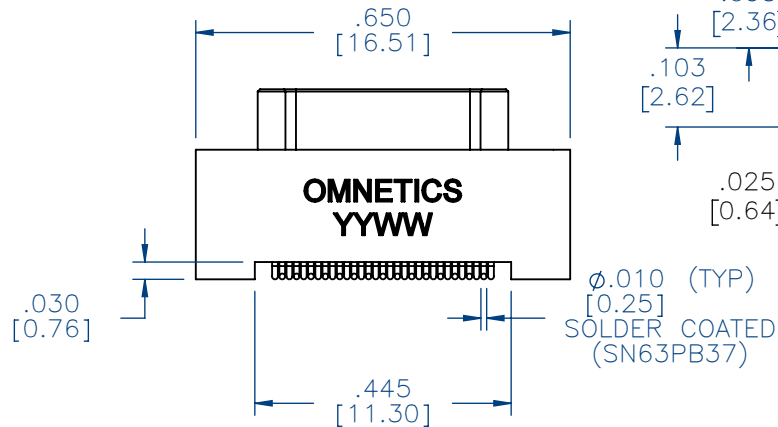
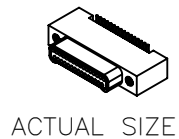
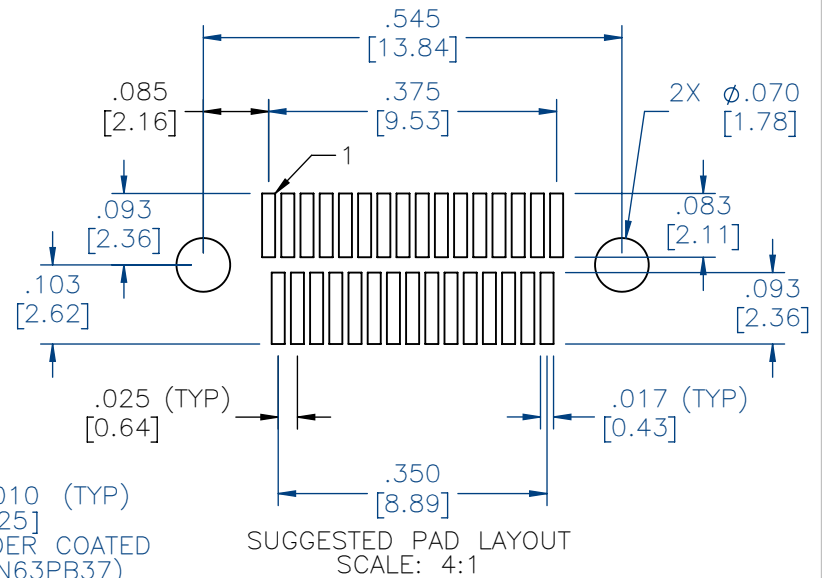
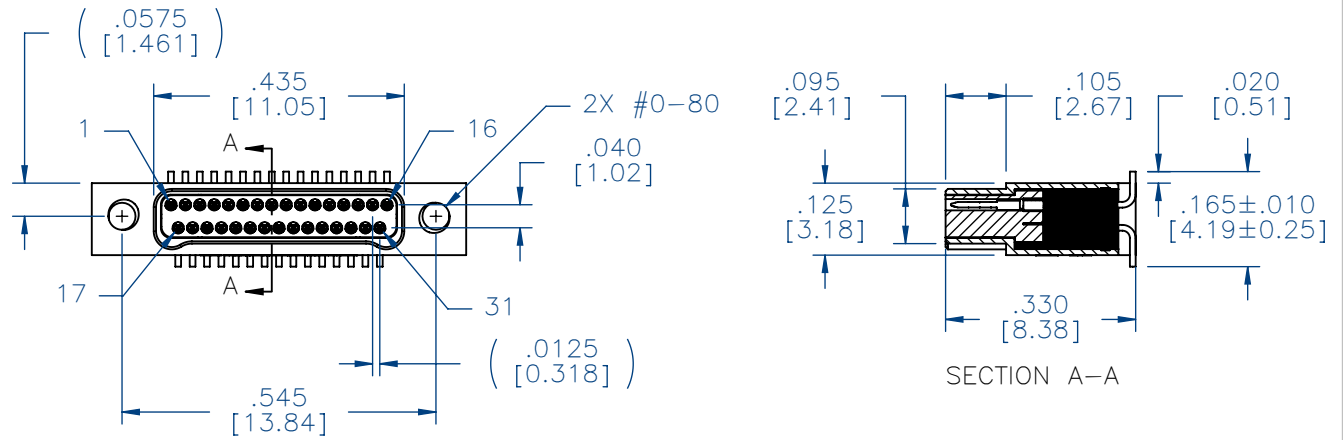


MATERIALS & SPECIFICATIONS

SPECIAL INSTRUCTIONS: NO	PART NO.	A28200-031	REV	ECO	DATE	APP
			H	110465	1/25/24	BAS

- HOUSING:  
ALUMINUM 6061, NICKEL PLATED  
(500 MICRINCHES MINIMUM) PER  
SAE-AMS-2404.
- INSULATOR:  
LIQUID CRYSTAL POLYMER (LCP) PER  
ASTM D5138
- CONTACT:  
BERYLLIUM COPPER PER ASTM  
B194, C17200, GOLD PLATED PER  
ASTM B488, (HARD GOLD) TYPE II  
CODE C, CLASS 1.27
- TERMINATION:  
SOLDER COATED WITH SN63A PER  
J-STD-006 OR AMS-P-81728.
- CURRENT RATING:  
1 AMP MAX PER MIL-DTL-32139
- CONTACT RESISTANCE:  
71 MILLIOHM MAX (71mV DROP  
MAX) @ 1.0 AMPS PER MIL-DTL-  
32139
- PERFORMANCE:  
PRODUCT FAMILY TESTED TO AND  
PASSED THE PERFORMANCE  
SPECIFICATIONS OF TABLE VIII OF  
MIL-DTL-32139.



NOTES:  
1. DIMENSIONS IN [ ] ARE IN MILLIMETERS UNLESS OTHERWISE NOTED AND ARE FOR REFERENCE ONLY

MIND	THIRD ANGLE	THIS DRAWING CONTAINS CONFIDENTIAL AND PROPRIETARY INFORMATION WHICH IS THE PROPERTY OF OMNETICS CONNECTOR CORP. THIS DOCUMENT MAY NOT, IN WHOLE OR IN PART, BE DUPLICATED, OR DISCLOSED FOR ANY PURPOSE, WITHOUT WRITTEN PERMISSION FROM OMNETICS CONNECTOR CORP.
	-TOLERANCES-	
	UNLESS OTHERWISE NOTED	
	DIMENSIONS IN INCHES	
SLDW	2 PL DEC ± .01	TITLE:
	3 PL DEC ± .005	(31) PIN MALE
	4 PL DEC ± .0005	DFTM. AAS
	ANGLES ± 1°	DATE: 05-05-04
		Bi-Lobe® CONNECTOR

**OMNETICS**  
CONNECTOR CORPORATION  
8840 EVERGREEN BLVD.  
MINNEAPOLIS, MN 55433  
WWW.OMNETICS.COM

DWG NO.	CAGE CODE <b>61873</b>
<b>A28200-031</b>	
SHEET 1 OF 1	SCALE: 3:1
	REV H